

MONTHLY MEMBERSHIP PROGRESS REPORT

LOCATION LOUISIANA

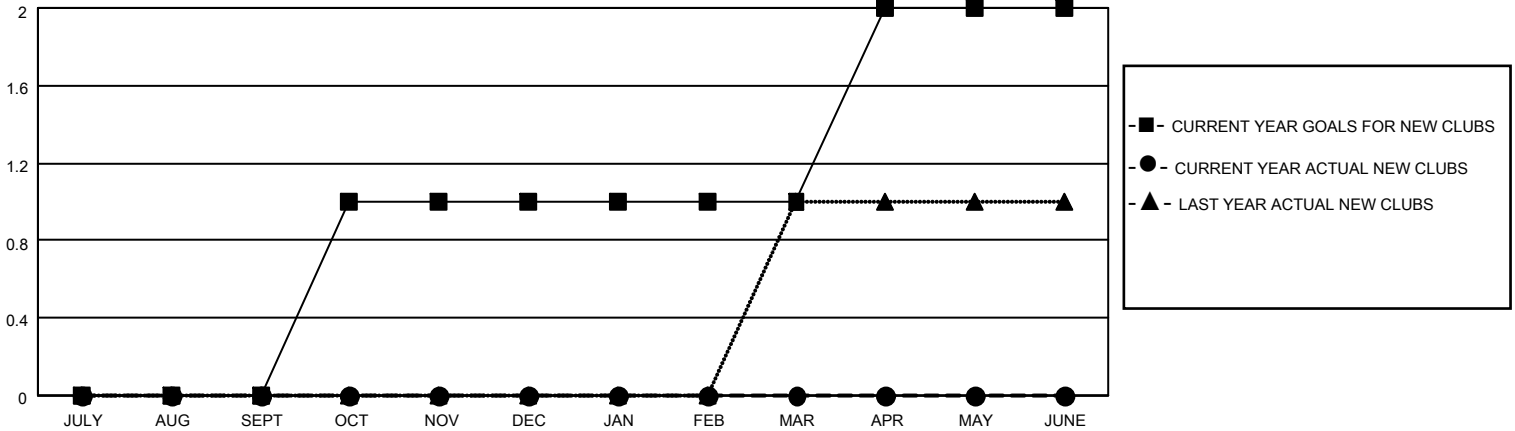
District 8 S

Results as of: 5/31/2023

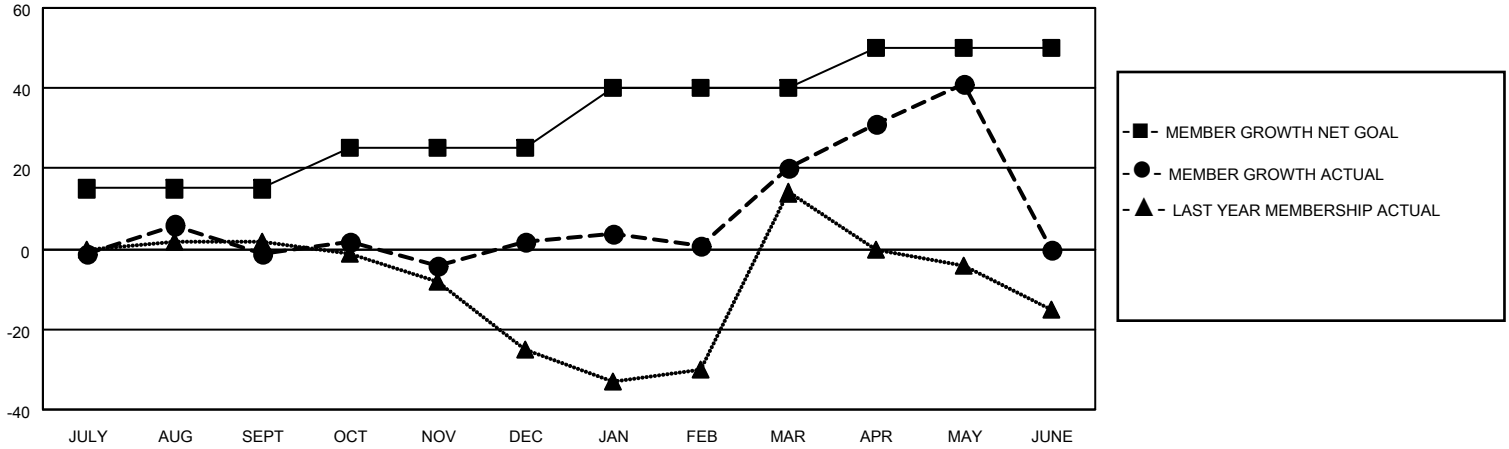
Clubs			
RESULTS FOR 2022-2023			
QUARTER	NEW CLUB GOAL	NEW CLUBS	DROPPED CLUBS
JULY/AUG/SEPT	0	0	0
OCT/NOV/DEC	1	0	0
JAN/FEB/MAR	0	0	0
APR/MAY/JUNE	1	0	0

Members			
RESULTS FOR 2022-2023			
QUARTER	MEMBER GROWTH NET GOAL	MEMBER GROWTH ACTUAL	DROPPED MEMBERS ACTUAL (including transfers)
JULY/AUG/SEPT	15	44	43
OCT/NOV/DEC	10	48	41
JAN/FEB/MAR	15	37	17
APR/MAY/JUNE	10	29	6

GOALS AND ACTUAL NEW CLUBS CUMULATIVE



GOALS AND ACTUAL MEMBERS CUMULATIVE



DROPPED CLUBS: 0

23 CLUBS OF 34 ADDED 1 OR MORE NEW MEMBERS

GENDER DISTRIBUTION

MALE	517 (51.44%)
FEMALE	486 (48.36%)
NON BINARY	0 (0.00%)
PREFER NOT TO ANSWER	2 (0.20%)

DROPPED MEMBERS

[CLICK HERE FOR CUMULATIVE MEMBERSHIP DATA](#)

DECEASED	11
CLUB CANCELLED	0
OTHER	96
TOTAL	107

TOTAL FAMILY UNIT MEMBERS 252

FAMILY MEMBERS PAYING HALF DUES 133